

# HEARTFULL FUKUSHIMA

## SUPPLEMENTARY ISSUE

### Fukushima Disaster Volunteer Center Magazine

Vol.5 May 23, 2011

## ●About this information leaflet

This (weekly) information leaflet is to be distributed at disaster volunteer centers around the prefecture to provide people with information about the activities run by relief volunteers who are assisting disaster victims and helping with the recovery efforts, as well as providing the reader with immediately useful information and relief coordination. Please send any thoughts or comments to the following address.

Publisher: **Fukushima Prefecture Council of Social Welfare  
Fukushima Disaster Volunteer Center**

Fukushima General Social Welfare Center F.1  
Watari Aza Nanashamiya 11 Fukushima City 960-8141

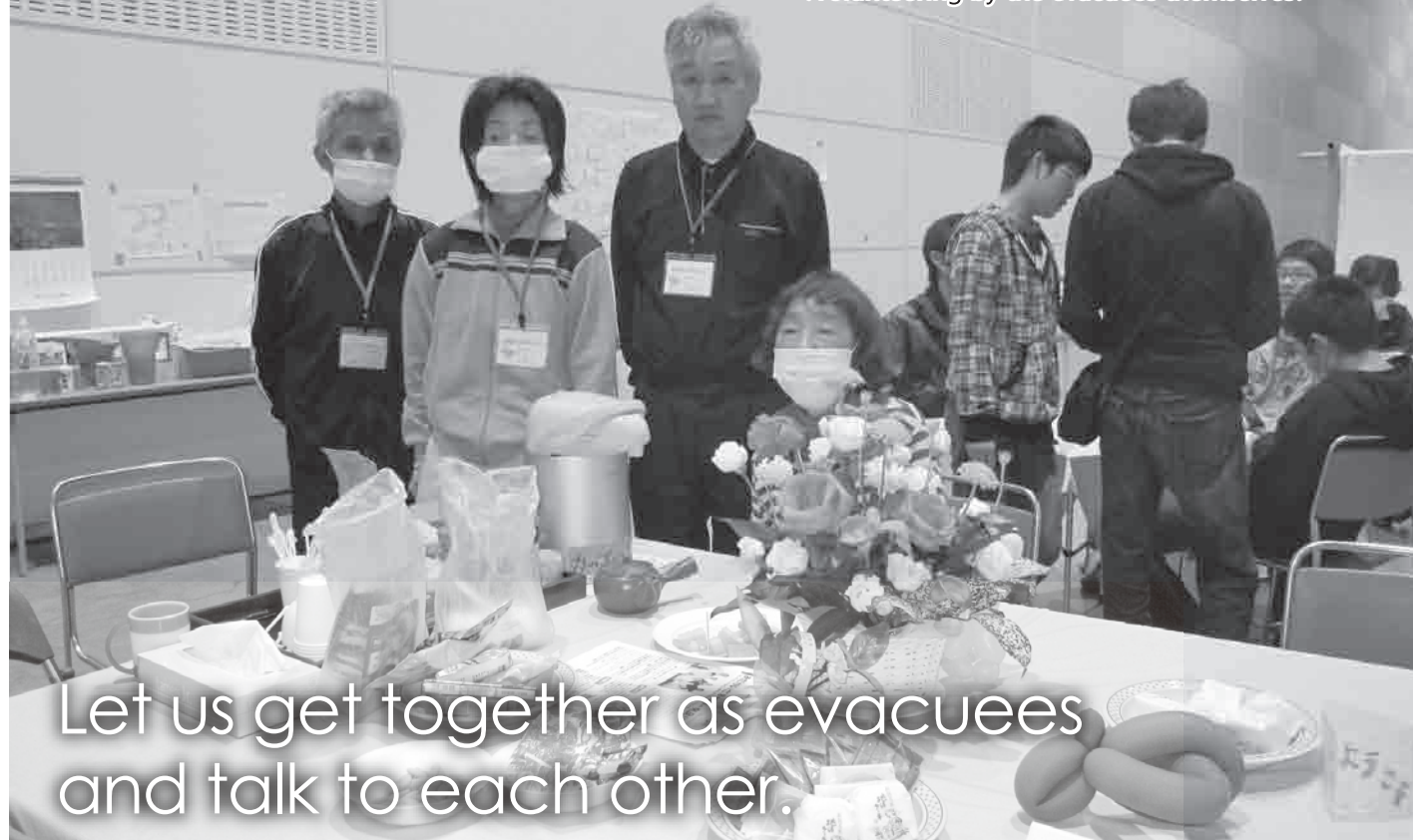
Tel: 024-522-6540 Fax: 024-523-4477

<http://www.pref-f-svc.org>



#### Volunteer Report 1 Big Palette Fukushima (Evacuation center): Café Tsutsuji Volunteer

<Volunteering by the evacuees themselves>



Let us get together as evacuees and talk to each other.

Since March 16th, many people from Tomioka-machi and Kawauchi-mura live as evacuees at the so-called Big Palette, which is the biggest evacuation center in the prefecture (as of beginning of May, around 1300 people).

From among these evacuees, people have emerged who are running a café corner as volunteers. One of these people is Norito Sugimoto. When he first arrived in the center, he stayed in the hallway on the 3rd floor, but when he was told that this is too dangerous due to aftershocks, he moved to the ground floor.

There was already a popular café, "Café Sakura", on the 2nd floor (since April 19th), so he got together with a few other people to start a café on the ground floor as well. "Café Tsutsuji" was born. "We hope that it will give everybody a chance to meet and to sit down and talk to each other." While he is learning from the staff members of "Sakura" (who are also evacuees) about how to make coffee and how to get people to come, he is always trying to make his café a better place.



▲Norito Sugimoto

#### Volunteer Report 2

<Volunteering by people who are not from the region>

##### ●Taxi service for people with disabilities



Atsushi Terakado runs a business for welfare taxis in Nagano prefecture. After the quake, he felt like he wanted to do something but was not sure

what. Then, he heard about an acquaintance, the boss of a bus company, who was starting a bus service for volunteers. That's when he decided to go ahead and take his car, too. He came to Fukushima by himself. He stayed at Big Palette from May 1st to May 5th. His service was very popular. A woman said "Thanks to him, I was finally able to go see my husband in hospital."

##### ●Organizing the children's books at the Kid's corner

Three students of the Ota Nurse Training School in Koriyama City (Asumi Aoyama, Yuri Ono and Tomoka Shioya). They had been feeling that it was



"frustrating not to be able to do anything" and when a fellow student asked them to join, they decided to come. "Today is our second time. We will keep coming!"

##### ●Organizing the goods



A mountain of boxes (with goods) at the A hall of Big Palette. Every day, about 20-30 volunteers are working on putting these supplies in order.

#### Introducing municipal natural disaster evacuation centers

##### ⑨ Odagaisama Center | Big Palette Fukushima Livelihood Support Volunteer Center



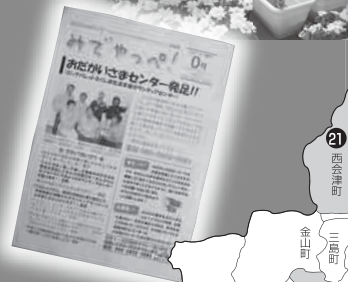
Shinichi Furuichi



On May 1st, a volunteer center opened at "Big Palette Fukushima" evacuation center (in Koriyama City). It was generally agreed upon that it should have a friendly and endearing name and so it was called "Odagaisama Center". This is a pun on "Otagaisama" which means roughly translated "one hand washes the other".

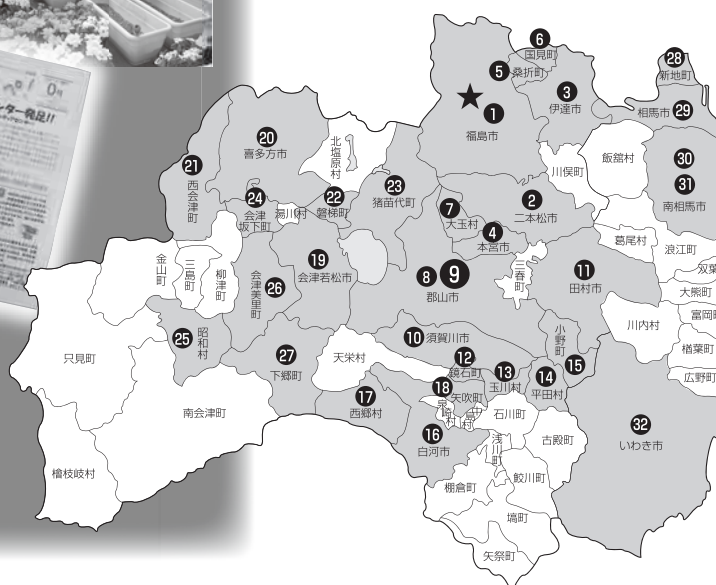
According to Shinichi Furuichi (Kawauchi-mura Social Welfare Council), three things are special about this center. First, it was opened inside an evacuation center. Second, the staff team is made up of people from Tomioka City, Kawauchi-mura, people from the prefecture and NPO staff. Third, not only volunteers from outside the region, but the evacuees themselves are participating and taking the initiative. Through this, they are aiming to establish a system of helping each other in their daily lives.

Mr. Furuichi says "It does not matter what it is, a hobby, anything - if people start with whatever it is they can do and help each other out, they then get connected. With that, we hope to turn the evacuation center into a real place to live." For this, to have a certain role is essential. When Volunteers were recruited for May 11th (Wed), to pull up the weeds around Big Palette, about 250 people participated. On the 14th (Sat), about 150 people planted flowers together. One of the aims of this center is that people will stay in touch with fellow evacuees and volunteers even after they have moved out into temporary housing.



#### Disaster Volunteer Centers Map

Placed at 32 locations, as of May 23rd



#### ★Fukushima Disaster Volunteer Center ..... TEL:024-522-6540

North	1	Fukushima City Disaster Volunteer Center	Central	9	'Odagaisama' Center Big Palette Fukushima Life Support Volunteer Center	South	17	Nishigo-mura Disaster Volunteer Center	Aizu	25	Showa-mura Disaster Volunteer Center
	2	Nihonmatsu City Disaster Volunteer Center		10	Sukagawa City Disaster Volunteer Center		18	Yabuki-machi Disaster Volunteer Center		26	Aizumisato-machi Disaster Volunteer Center
	3	Date City Disaster Volunteer Center		11	Tamura City Disaster Volunteer Center		19	Aizuwakamatsu City Disaster Volunteer Center		27	Shimogo-machi Disaster Volunteer Center
	4	Motomiya City Disaster Volunteer Center		12	Kagamiishi-machi Disaster Volunteer Center		20	Kitakata City Disaster Volunteer Center		28	Shinchi-machi Disaster Volunteer Center
	5	Kori-machi Disaster Volunteer Center		13	Tamakawa-mura Disaster Volunteer Center		21	Nishiaizu-machi Disaster Volunteer Center		29	Soma City Disaster Volunteer Center
	6	Kunimi-machi Disaster Volunteer Center		14	Hirata-mura Disaster Volunteer Center		22	Bandai-machi Disaster Volunteer Center		30	Minamisoma City Disaster Volunteer Center, Kashima-ku
	7	Otama-mura Disaster Volunteer Center		15	Ono-machi Disaster Volunteer Center		23	Inawashiro-machi Disaster Volunteer Center		31	Minamisoma City Disaster Volunteer Center, Haramachi-ku
Central	8	Koriyama City Disaster Volunteer Center		16	Shirakawa City Disaster Volunteer Center		24	Aizubange-machi Disaster Volunteer Center		32	Iwaki City Disaster Relief Volunteer Center