

HEARTFULL FUKUSHIMA

SUPPLEMENTARY ISSUE

Fukushima Disaster Volunteer Center Magazine

First Issue: April 26, 2011

About the magazine

The magazine hopes to provide information on volunteer activities supporting revitalization of the disaster region and disaster victims, as well as useful information for everyone. Please send your impressions and comments to the contact below.

Publisher:
**Fukushima Prefecture Council of Social Welfare
 Fukushima Disaster Volunteer Center**
 Fukushima General Social Welfare Center F.1
 Watari Aza Nanashamiya 11
 Fukushima City 960-8141
Tel: 024-522-6540 Fax: 024-523-4477

The first issue of the Fukushima Disaster Volunteer Center magazine has been created and will be distributed at disaster volunteer centers in the Prefecture. (Approx. once a week)

Scenes never seen before.

Stunned, all I could do was look at what was happening in front of me.

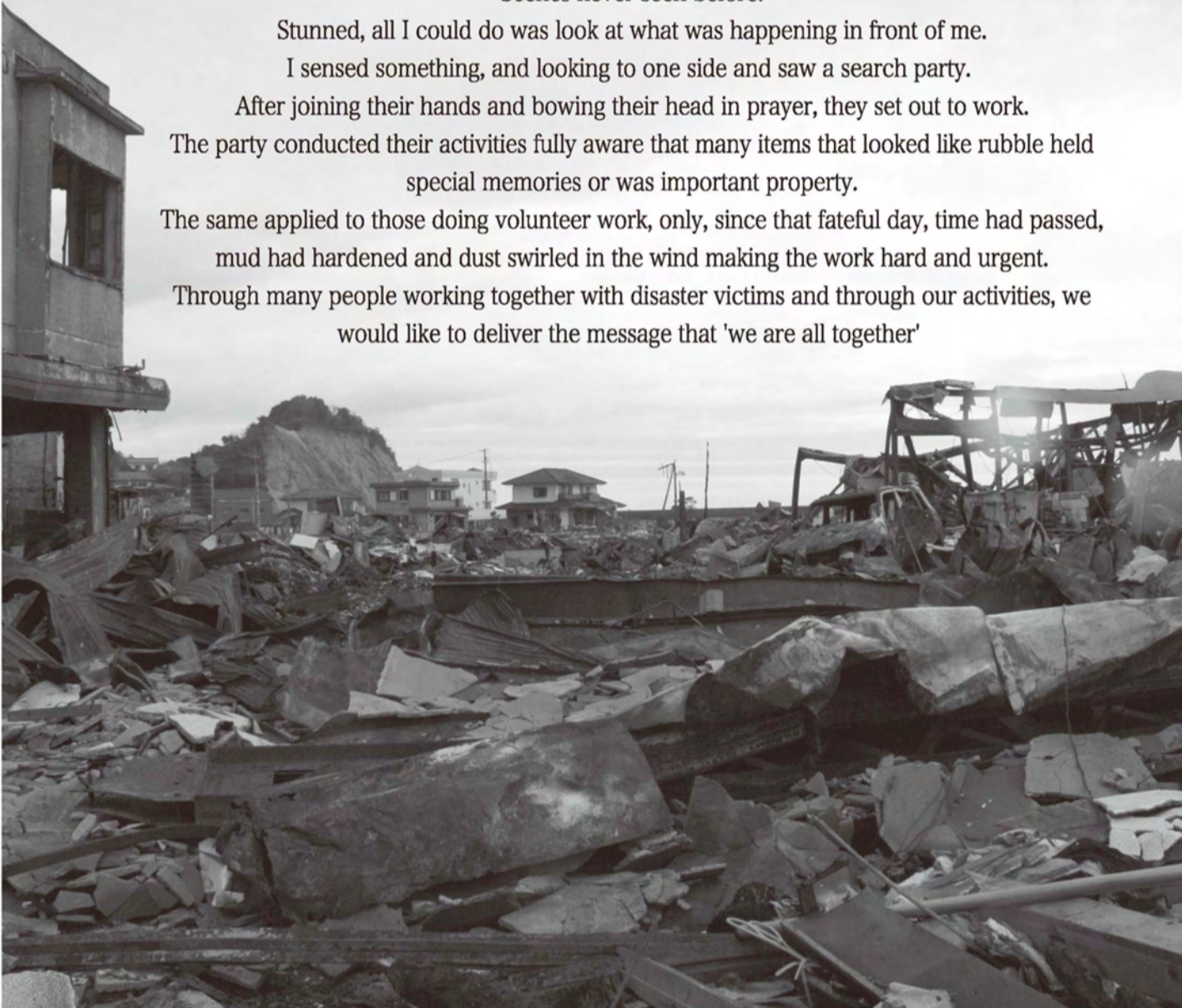
I sensed something, and looking to one side and saw a search party.

After joining their hands and bowing their head in prayer, they set out to work.

The party conducted their activities fully aware that many items that looked like rubble held special memories or was important property.

The same applied to those doing volunteer work, only, since that fateful day, time had passed, mud had hardened and dust swirled in the wind making the work hard and urgent.

Through many people working together with disaster victims and through our activities, we would like to deliver the message that 'we are all together'



Volunteer Report

"Omoide Sagashi-tai" (memories search team)

The "Omoide Sagashi-tai" (memories search team) is one of the townspeople's mutual help activities. The town's civil servants, townspeople and company volunteers carefully clean mud and other dirt from photo albums, schoolbags, award certificates, etc. that the Self Defense Forces and local volunteer fire brigade collected, and display them in different categories. Although it was very hard work at times when the water was very cold, when one thinks of the victims who lost everything in the tsunami, the activity was continued so that at least some items that had special memories for them could be returned. Some days, as many as 60 people visited the storehouse to look for things that held special memories for them. (April 13, 2011 Shinchi-machi)



About the Fukushima Disaster Volunteer Center



A scene at the Fukushima Disaster Volunteer Center

The Fukushima Disaster Volunteer Center was set up on the first floor of the Fukushima General Social Welfare Center in accordance with the establishment guidelines of the Fukushima Disaster Volunteer Liaison Council (1).

At the Disaster Center, various organizations liaise to ensure smooth and swift support activities.

It's main activities are supporting the establishment and management of disaster volunteer centers in cities, towns and villages, and securing materials and equipment as well as recruiting volunteers so that disaster victims may live safely and securely as soon as possible.

As of April 20, disaster volunteer centers had been established in 31 cities, towns and villages.

(1) Fukushima Disaster Volunteer Liaison Council
 The Liaison Council consists of 7 organizations: Japanese Red Cross Society Fukushima Branch; Fukushima Prefecture Council of Social Welfare; Japan Amateur Radio League, Fukushima; Junior Chamber International Japan, Tohoku Region Fukushima Block Council; Heart Net Fukushima (NPO); Fukushima Community Chest Association; 3 sections of Fukushima Prefecture governmental agencies, with the Fukushima Prefecture Council of Social Welfare acting as its secretariat.



Disaster Volunteer Centers Map



★ Fukushima Disaster Volunteer Center TEL:024-522-6540

- | | | | | | |
|---|---|--|---|--|---|
| <p>North</p> <ul style="list-style-type: none"> 1 Fukushima City Disaster Volunteer Center 2 Nihonmatsu City Disaster Volunteer Center 3 Date City Disaster Volunteer Center 4 Motomiya City Disaster Volunteer Center 5 Kori-machi Disaster Volunteer Center 6 Kunimi-machi Disaster Volunteer Center 7 Otama-mura Disaster Volunteer Center | <p>Central</p> <ul style="list-style-type: none"> 8 Koriyama City Disaster Volunteer Center 9 Sukagawa City Disaster Volunteer Center 10 Tamura City Disaster Volunteer Center 11 Kagamiishi-machi Disaster Volunteer Center 12 Tamakawa-mura Disaster Volunteer Center 13 Hirata-mura Disaster Volunteer Center 14 Ono-machi Disaster Volunteer Center | <p>South</p> <ul style="list-style-type: none"> 15 Shirakawa City Disaster Volunteer Center 16 Nishigo-mura Disaster Volunteer Center | <p>South</p> <ul style="list-style-type: none"> 17 Yabuki-machi Disaster Volunteer Center 18 Aizuwakamatsu City Disaster Volunteer Center 19 Kitakata City Disaster Volunteer Center 20 Nishiaizu-machi Disaster Volunteer Center 21 Bandai-machi Disaster Volunteer Center 22 Inawashiro-machi Disaster Volunteer Center 23 Aizubange-machi Disaster Volunteer Center 24 Showa-mura Disaster Volunteer Center | <p>Aizu</p> <ul style="list-style-type: none"> 25 Aizumisato-machi Disaster Volunteer Center 26 Shimogo-machi Disaster Volunteer Center 27 Shinchi-machi Disaster Volunteer Center 28 Soma City Disaster Volunteer Center 29 Minamisoma City Disaster Volunteer Center, Kashima-ku 30 Minamisoma City Disaster Volunteer Center, Haramachi-ku | <p>Iwaki</p> <ul style="list-style-type: none"> 31 Iwaki City Disaster Volunteer Center |
|---|---|--|---|--|---|